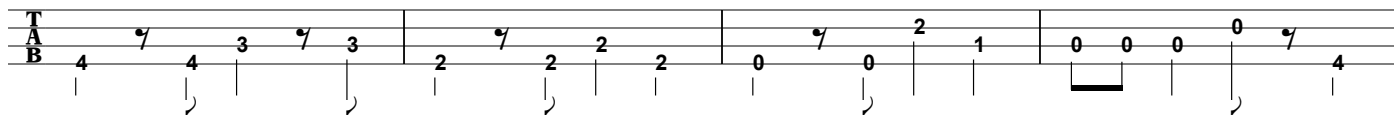
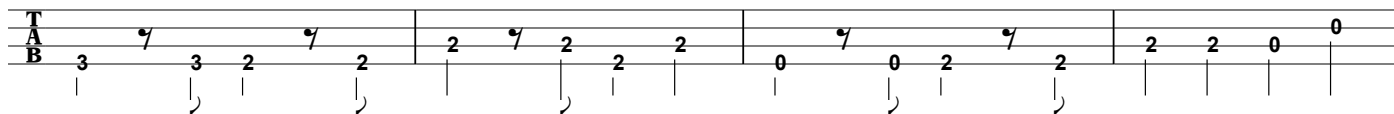
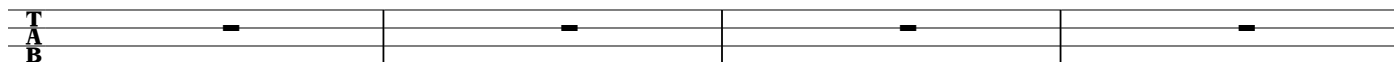
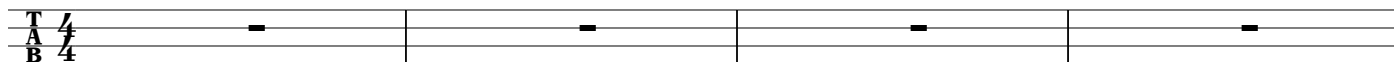
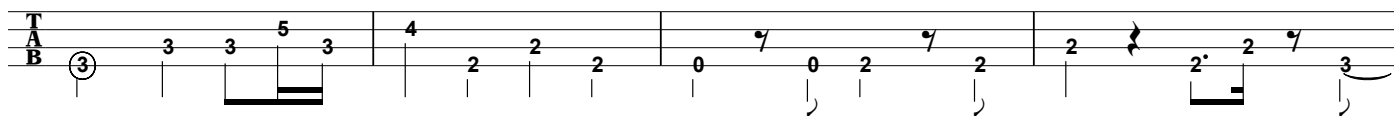
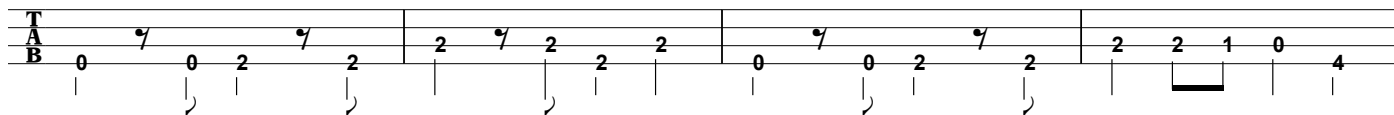
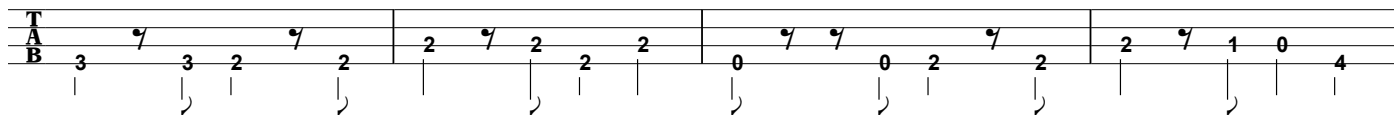


何なんw

m,yukitani



A



B

TAB notation for section B, first line. Treble and bass staves. Includes circled '3' and various fret numbers (7, 5, 3, 0, 1, 3, 3, 3, 2, 0, 3, 0, 4).

TAB notation for section B, second line. Treble and bass staves. Includes circled '3' and various fret numbers (3, 3, 3, 3, 0, 1, 3, 0, 1, 3, 1, 0, 0, 0, 0, 2, 2).

C

TAB notation for section C, first line. Treble and bass staves. Includes repeat sign and various fret numbers (3, 3, 3, 7, 3, 2, 2, 2, 0, 3, 3, 3, 7, 3, 2, 2, 2).

TAB notation for section C, second line. Treble and bass staves. Includes various fret numbers (3, 3, 3, 7, 3, 2, 2, 2, 0, 0, 0, 0, 0, 0, 1, 1, 0, 2, 2, 2, 0, 0, 0).

1.

TAB notation for section C, third line. Treble and bass staves. Includes various fret numbers (0).

TAB notation for section C, fourth line. Treble and bass staves. Includes circled '4' and '2' and various fret numbers (4, 4, 4, 4, 2, 2, 2, 0, 0, 0, 0, 0, 4, 0).

B

TAB notation for section B, fifth line. Treble and bass staves. Includes various fret numbers (0, 3, 3, 3, 7, 0, 1, 3, 3, 3, 2, 0, 3, 0, 4, 4).

TAB notation for section B, sixth line. Treble and bass staves. Includes various fret numbers (3, 3, 3, 4, 3, 3, 3, 3, 0, 1, 1, 3, 1, 0, 1, 3, 2, 2, 2, 0, 2, 2).

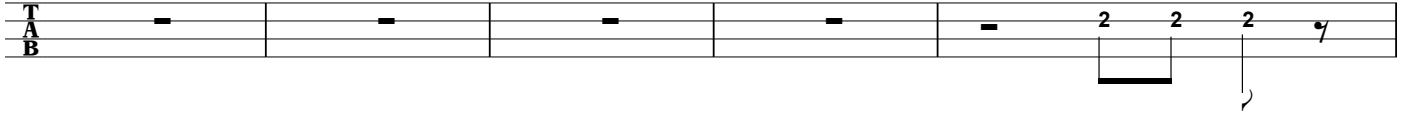
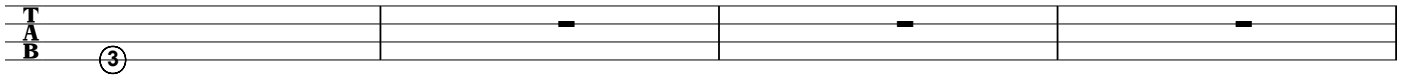
2.

TAB notation for section B, seventh line. Treble and bass staves. Includes various fret numbers (4, 4, 4, 4, 4, 4, 4, 4, 4, 2, 2, 2, 2, 0, 0, 0, 0).

TAB notation for section B, eighth line. Treble and bass staves. Includes various fret numbers (4, 4, 4, 4, 4, 4, 4, 4, 2, 2, 2, 2, 0, 0, 0, 0).

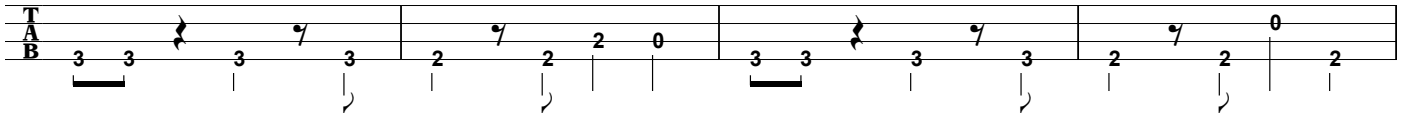
B

TAB ③

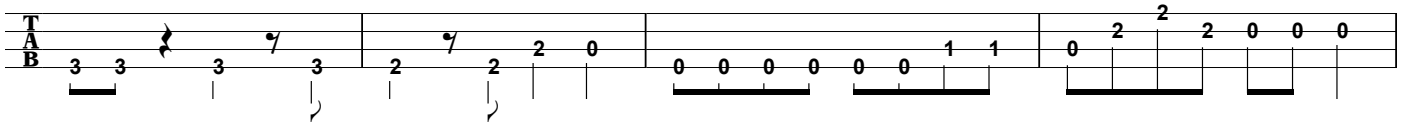


C

TAB

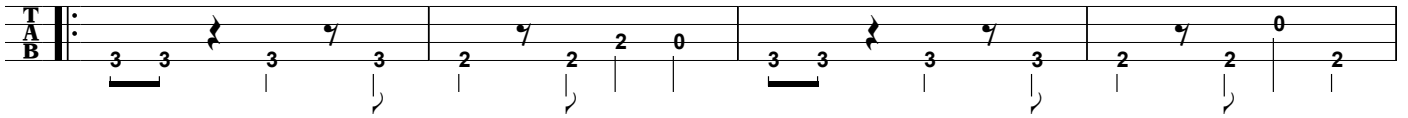


TAB



D

TAB



TAB

